

# FAMILY/WHĀNAU SUPPORT GROUP

## A chance to meet others and connect.

Odyssey staff will be there to greet you, and provide support. This is an open group covering all services across Odyssey.

Quote from a family member about the group:

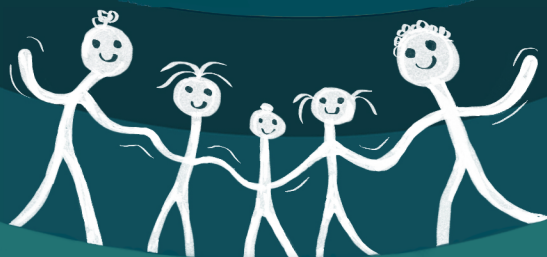
*"The family support group is a very low key way to just listen or chat a little about your experiences. Even if you just go once, it's worth it."*

## 2024 DATES

04/04/24	22/08/24
02/05/24	19/09/24
30/05/24	17/10/24
27/06/24	14/11/24
25/07/24	12/12/24

**6:00pm – 7:00pm**

Barry Rich Room,  
98 Greers Rd, Burnside  
Parking on site



If you would like more information about this service, please contact Adele Sherry:

021 873 318