

FAMILY/WHĀNAU SUPPORT GROUP

A chance to meet others and connect.

Odyssey staff will be there to greet you, and provide support. This is YOUR group and we would love to see you there.

Quote from a family member about the group:

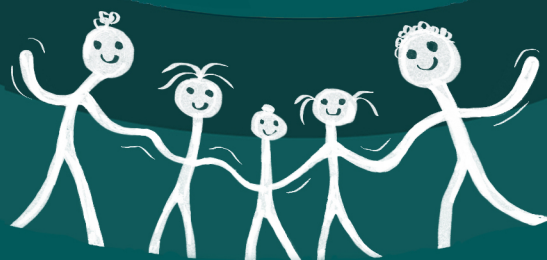
"The family support group is a very low key way to just listen or chat a little about your experiences. Even if you just go once, it's worth it."

2024 DATES

11/01	25/07
08/02	22/08
07/03	19/09
04/04	17/10
02/05	14/11
30/05	12/12
27/06	

6.45pm – 7.45pm

Christchurch Central Service,
55 – 58 Ferry Rd
Parking on site



If you would like more information about this service, please contact Brooke Smith:
027 529 0275